

PRESENTING

23 BAYVIEW RIDGE

GOOD AGENTS

TABLE OF CONTENTS

All About The Area

BridlePath-Sunnybrook-York Mills

Uniqueness of Bayview Ridge

Bayview Ridge Neighborhood

About The House

Features , Floorplans

Main Floor

Lobby, Powder Room, Office, Guest Suite, Family Room, Dining Room

Kitchen

Second Floor

Primary Bedroom, Primary Ensuite

Lower Level

Rec Area, Theater, Gym

Backyard

The Vision Behind The Project



Bridlepath-Sunnybrook York Mills

It is one of Toronto's most affluent and prestigious neighborhoods, home to many mansions and estates owned by wealthy business people and celebrities.

The Bridle Path area is known for its winding roads and large multi-million dollar homes set back from the street on very large lots with extensive landscaping.

York Mills Road is a major artery running through the neighborhood and is lined with upscale shopping plazas and restaurants.

The area borders the Don River valley system and E.T. Seton Park, providing green space and recreational trails.

The neighborhood dates back to the early 20th century when the Bridle Path area was developed as an enclave for Toronto's elite.

Uniqueness of Bayview Ridge

Bayview Ridge stands out as one of Toronto's premier streets for several compelling reasons. Its prime location combines tranquility with accessibility, offering a peaceful retreat from the city's hustle and bustle while remaining conveniently close to downtown amenities.

On one side majority of estates capture the view of Rosedale Golf Course and the other side, nothing better than the beautiful view of mature trees. The street is renowned for its picturesque setting, characterized by tree-lined boulevards and architecturally distinctive homes that reflect both classic elegance and contemporary design. Residents of Bayview Ridge enjoy a strong sense of community, enhanced by local parks, upscale shops, and top-rated schools nearby. Whether strolling along its charming sidewalks or admiring its well-preserved residences, Bayview Ridge epitomizes the allure of urban living at its finest in Toronto.



About the House

In a world where value is often measured by numbers, there is a place where true worth transcends mere figures. Perched on a 1.25-acre hill along Millionaires Row in Bridle Path, this estate boasts an exquisite ravine lot with sweeping views over 15 acres of lush golf course and a captivating city skyline. Welcome to 23 Bayview Ridge, where value and luxury converge in a grand 12,000 sq. ft. estate. This architectural masterpiece spans two magnificent stories, constructed from solid concrete and adorned with opulent marble floors throughout. Its grandeur is highlighted by a striking zigzag metal design that blends modern aesthetics with timeless elegance.

Type: Detached

Style: 2-Storey

Lot Size: Irregular, Approx. 1.25 Acres

Frontage: West

Lot Dimensions: 110.38 x 506.04 Feet

Total Rooms: 16 + 5

Bedrooms: 7 + 2

Elevator: Yes

Washrooms: 11

Main Level Ceiling Height: 11 feet

Second Level Ceiling Height: 10 feet

Lower Level Ceiling Height: 10 feet

Exterior: Limestone

Building Material: Pure Concrete

Structure: Zigzag Metal

Heating: Forced Air / Gas

Air Conditioning: Central Air



DWELL

LUXURY HOMES & LIFESTYLE

Discover Toronto's Premier Estate at 23 BAYVIEW RIDGE

Nestled on Toronto's prestigious Millionaires' Row at Bridle Path Bayview Ridge, this newly redesigned estate stands as a testament to the art of living well. When arriving at this grand 1.25-acre estate, rolling hills and serene landscapes set the stage. As you enter, you are greeted by a ravine lot with panoramic views of a lush 15-acre golf course. Beyond the verdant greens, the city skyline creates a captivating display of shimmering lights, adding an extra layer of enchantment to this already stunning property.



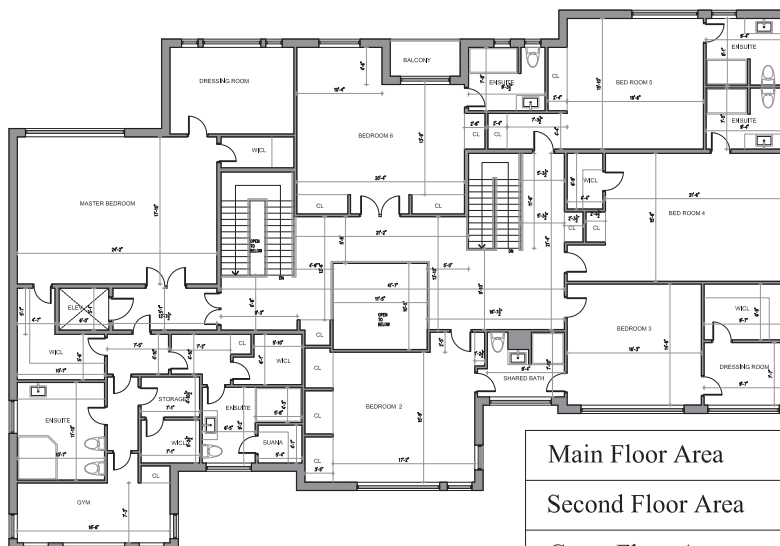
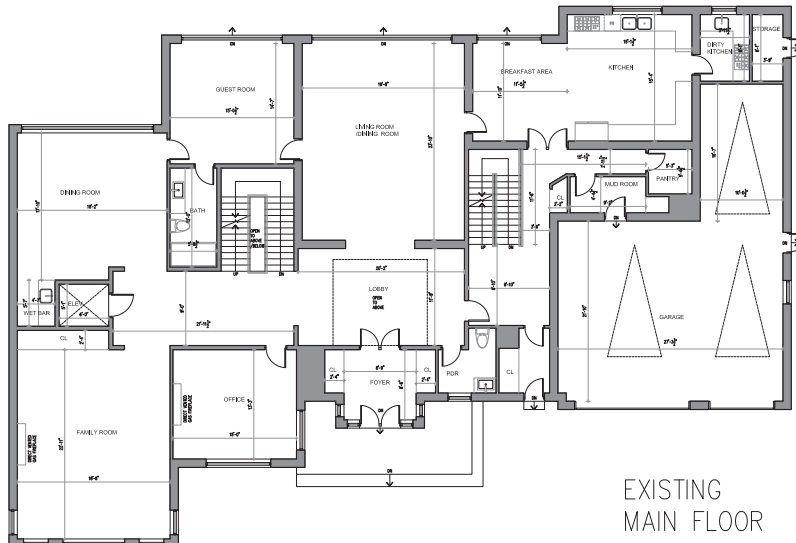
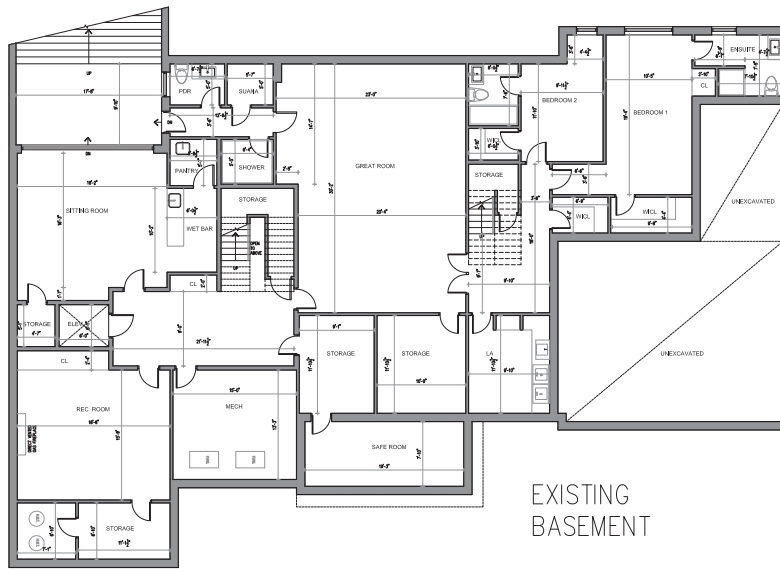
23

Bayview Ridge, a marvel of architectural design, spans an impressive 12,000 square feet across two floors. Constructed with solid concrete and adorned with striking zig-zag metal accents, the grandeur of the estate is further highlighted by a spacious circular driveway and a fourth garage that accommodates up to 22 vehicles. Inside, the estate offers a haven of comfort and style with 9 bedrooms and 11 bathrooms. Newly redesigned and awaiting your personal touch, this estate represents a unique opportunity to embrace a lifestyle where true value is found in the harmony of exquisite surroundings and fulfilling living.

Priced at \$11,000,000

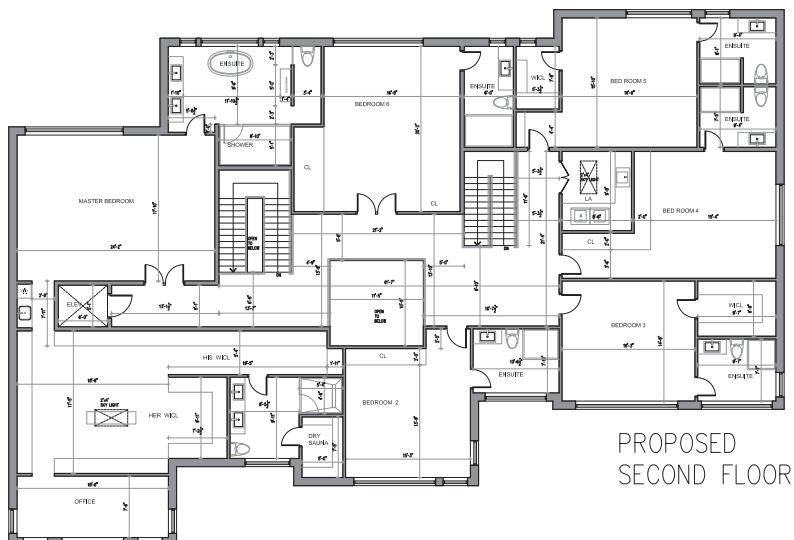
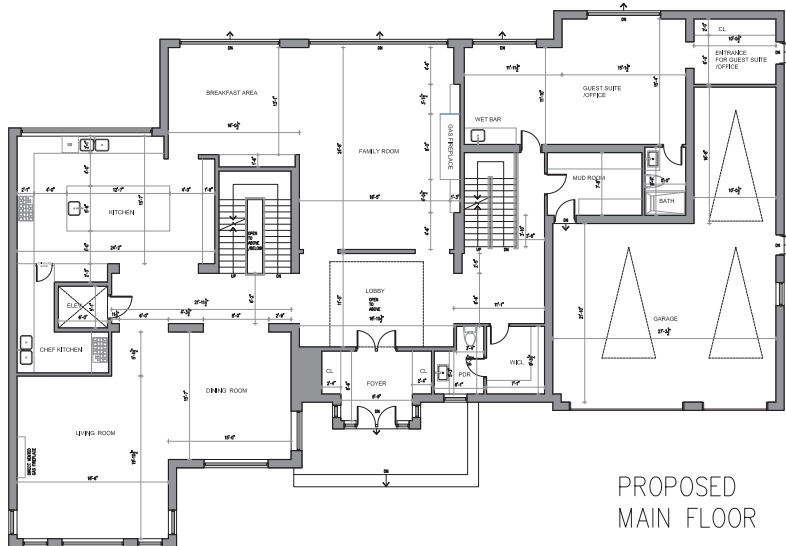
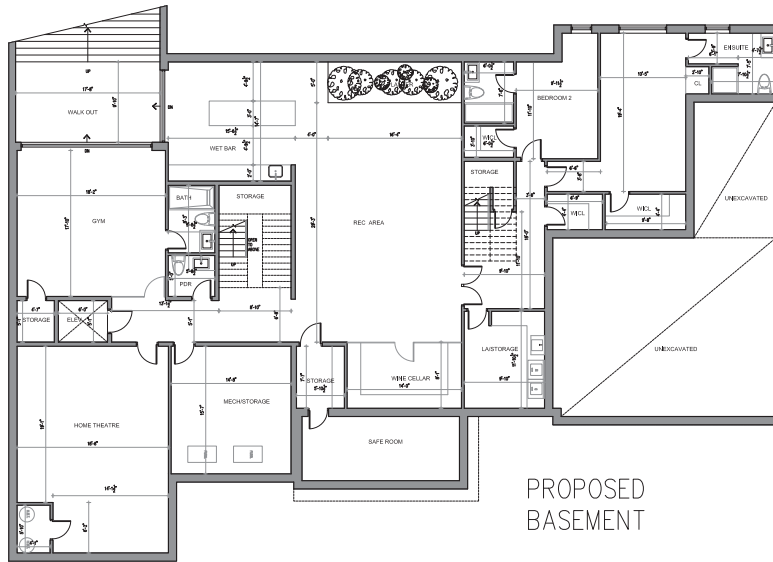
REPRESENTED BY MERAD SAFAIAN AND AL MOUSAVI OF THE AGENCY TORONTO

Existing Floorplan



Main Floor Area	3770.7 sqft
Second Floor Area	4670.53 sqft
Gross Floor Area	8441.23 sqft
Finished Basement	3733.53 sqft

New Floorplan



Lobby

Before & After



Powder Room

Before & After



Office

Before & After



Guest Suite

Before & After



Family Room

Before & After



Dining Room

Before & After





Living Area

Before & After





Kitchen

Before & After





Primary Bedroom

Before & After





Primary Ensuite

Before & After





Rec Area

Before & After



Home Theatre

Before & After



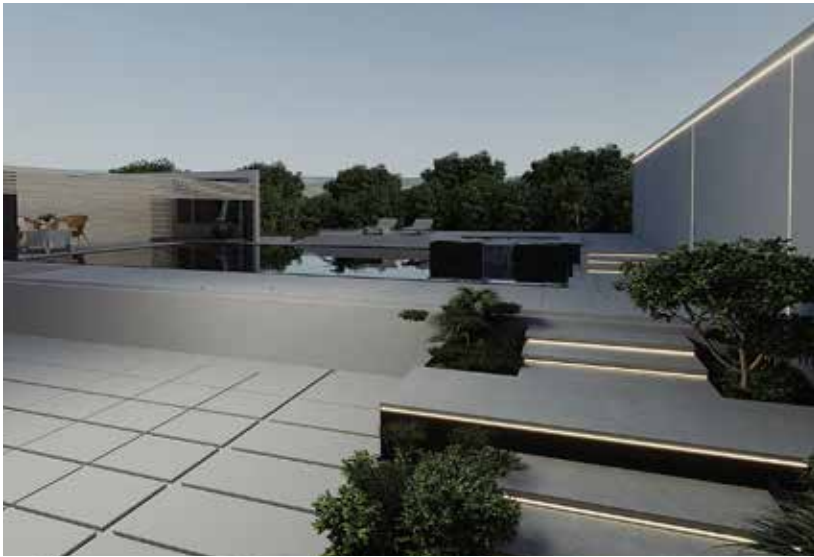
Gym

Before & After



Backyard

Before & After



The Vision Behind The Project

In the heart of Toronto's Bridle Path neighborhood, a remarkable transformation is unfolding at 23 Bayview Ridge. What began as a bold vision is now becoming a testament to timeless elegance and modern luxury.

Our journey started with a deep appreciation for the estate's potential. Standing on the 1.25-acre lot, we were captivated by the sweeping views of Rosedale Golf Course and the city skyline, seeing an opportunity to blend historical charm with contemporary sophistication.

From the outset, we knew this project was about more than renovation; it was a quest to harmonize the estate's storied past with the comforts of modern living. Our team embarked on this journey with passion, driven by a vision to preserve the original beauty while infusing the home with modern enhancements.

Every step was guided by careful planning and thoughtful execution. We revitalized the kitchen into a chef's dream and reimagined the entertainment spaces for contemporary enjoyment. Each decision balanced respect for the estate's heritage with innovative updates.

Behind the scenes, our dedication was evident in every detail. Through collaboration and creativity, we aimed to turn 23 Bayview Ridge into a modern masterpiece. As the project progresses, this grand estate is evolving into a symbol of luxury where the past and future coexist in perfect harmony.

This is the story of how a vision for 23 Bayview Ridge is becoming a reality—a narrative of transformation and excellence that promises a new chapter of refined living.



MERAD SAFAIAN
BROKER

MERAD.SAFAIAN@THEAGENCYRE.COM

416.837.0311



INTERIOR DESIGN:
V&S DESIGN INC.
ARCHITECTURAL DESIGN:
HIRMAN ARCHITECT GROUP
& MERAD HOMES



AL MOUSAVIZADEH
SALES REPRESENTATIVE
AL.MOUSAVID@THEAGENCYRE.COM

226.698.5755



23 BAYVIEW RIDGE