



100 BAYVIEW RIDGE

6+2 BEDROOMS | 12 BATHROOMS | 3 GARAGE

Set on 44,595 square feet in the Bridle Path, this residence reflects a singular vision: that quality is earned through discipline, not decoration.

Hand-selected marble wraps the interiors and exterior. Custom millwork lines every wall—built in place, finished by hand. Radiant heating flows beneath stone floors.

Twelve bathrooms, each one individually designed. Twin kitchens equipped for function and scale.

The lower level houses a full spa with steam and sauna, a professional gym, a private theater, and a custom walnut bar.

This is architecture shaped by craft, patience, and intent.



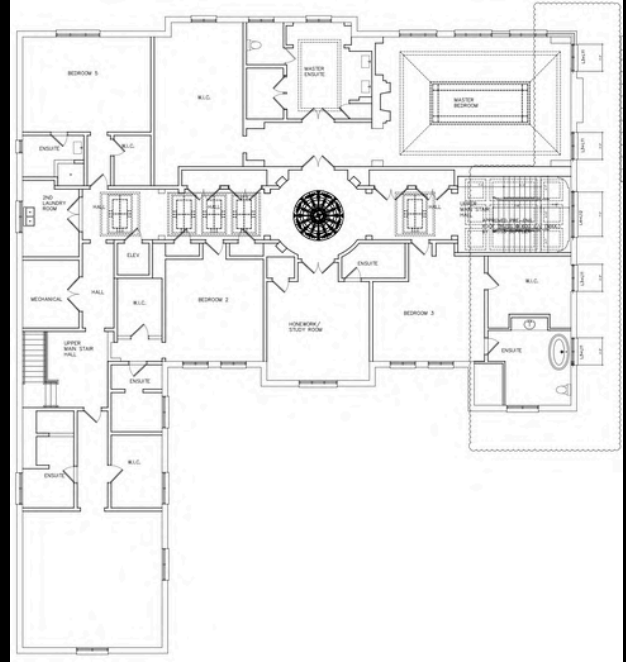
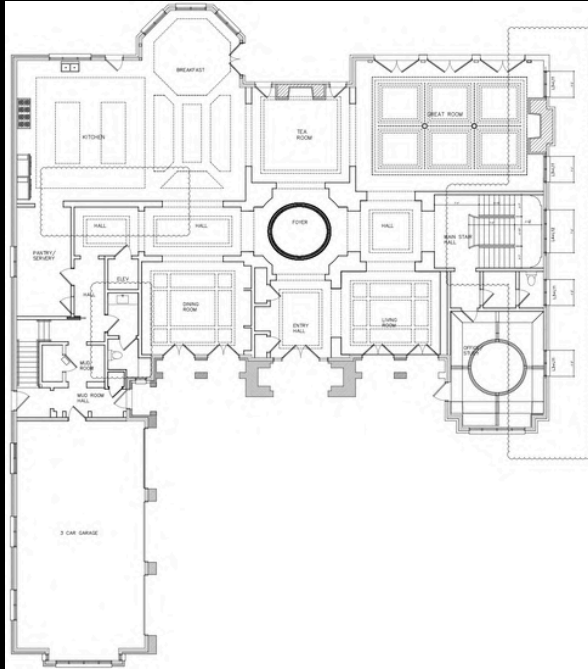




BRIDLEPATH-SUNNYBROOK YORK MILLS

It is one of Toronto's most affluent and prestigious neighborhoods, home to many mansions and estates owned by wealthy businesspeople and celebrities. The Bridle Path area is known for its winding roads and large multi-million-dollar homes set back from the street on spacious lots with extensive landscaping. York Mills Road is a major artery running through the neighborhood and is lined with upscale shopping plazas and restaurants. The area borders the Don River valley system and E.T. Seton Park, providing green space and recreational trails. The neighborhood dates back to the early 20th century, when the Bridle Path area was developed as an enclave for Toronto's elite.

FLOOR PLAN



CURATED EXCELLENCE

100 Bayview Ridge showcases the finest in luxury appointments and craftsmanship, featuring curated selections from the world's most prestigious brands:

- Wolf built-in appliances (ovens, warming drawer)
- Sub-Zero refrigeration and wine cellar
- Cove dual dishwashers
- Axent Smart toilet
- Graff Faucet
- Victoria+Albert Bath Tub
- Duravit bathroom systems.
- Garaventa residential elevator
- Custom onyx countertops
- Quartzite stone throughout
- Natural stone and glass exterior cladding
- Radiant heated floors throughout
- Central vacuum system
- Custom millwork in walnut and white oak
- Marble and porcelain slab flooring





The front vestibule, open to above, showcases a grand steel entry door with a clad glass finish and high-security multi-lock system. It features heated matte porcelain slab flooring, a two-storey quartzite-wrapped wall mirror with backlighting and a floating shelf, and a push-to-open guest closet. A dual-sided vertical gas fireplace connects interior and exterior views, while an integrated white oak bench sits beneath a cathedral ceiling with a custom suspended design and an Italian copper chandelier. A lit quartzite box planter and matching accent lighting complete the sophisticated entry.

The kitchen showcases twin glowing onyx islands as a stunning centerpiece, equipped with Wolf professional appliances including a range, dual ovens, and a warming drawer, alongside Sub-Zero refrigeration and dual Cove dishwashers for effortless entertaining. Custom European-style cabinetry features soft-close mechanisms, with ivory perimeter cabinets contrasted by charcoal storage walls accented in brushed gold trim.



A floor-to-ceiling quartzite backsplash with subtle veining pairs beautifully with radiant-heated polished white porcelain floors that reflect light from large garden-facing windows. Brushed gold pendant lights highlight both prep and gathering areas, while French doors open to a terrace for seamless indoor-outdoor dining. A waterfall-edge onyx breakfast bar offers casual seating, complemented by a butler's pantry and secondary prep kitchen for added convenience.



PREP KITCHEN

A dedicated workspace built for performance. Over \$50,000 invested in equipment and finishes alone.

- Sub-Zero and Wolf appliances
- Dual ovens and dishwashers
- Natural marble countertops
- Radiant heating throughout
- Custom paneled millwork











A sophisticated retreat for work or contemplation, enveloped in rich walnut paneling with custom millwork throughout. Bay windows frame landscaped views while providing abundant natural light.

- Floor-to-ceiling custom walnut paneling
- Coffered ceiling with integrated lighting
- Statement circular chandelier
- Bay window overlooking gardens
- Custom built-in cabinetry
- Wide-plank hardwood flooring
- Radiant heated floors





The second floor houses the private quarters, accessed via grand staircase or Garaventa elevator. The primary suite spans over 500 square feet with walk-in closets and 6-piece spa ensuite featuring soaking tub, oversized shower, and radiant-heated floors. Two additional bedrooms offer bay windows, walk-in closets, and private ensuites finished in premium stone. Upper level laundry room provides convenient access to all sleeping quarters.



BATHROOM COLLECTION



The primary suite, spanning over 500 square feet, features a private staircase, high ceilings, and large windows with treed views. Its 6-piece spa ensuite includes radiant-heated marble floors, a freestanding tub, a glass shower with rain head and body jets, and dual vanities with premium fixtures and custom lighting. Walk-in closets are fully built-in with LED lighting, luxury hardware, center islands, and organized sections for clothing and accessories—every detail crafted for comfort, privacy, and daily indulgence.





The finished walk-up lower level offers a private retreat for wellness, entertainment, and relaxation, with multiple walk-outs to pool and garden areas creating seamless indoor-outdoor flow.

- Recreation room
- Home theater
- Fully-equipped fitness center
- Traditional cedar sauna
- Sub-Zero wine cellar
- Guest suite
- Radiant-heated floors
- walk-outs to pool and gardens













PETER TORKAN

Founder-Broker

peter.torkan@theagencyre.com

416.847.5288

MERAD SAFAIAN

Broker

meradsafaian@gmail.com

416.837.0311

AL MOUSAVI

Sales representative

al.mousavi@theagencyre.com

437.688.6887